

EnoGeneFec™ Transfection Reagents

- ★ Affordable !! Reliable !! High Efficiency !! ★
- ★ Lowest Toxicity !! Applicable to Any Cell Line !! ★



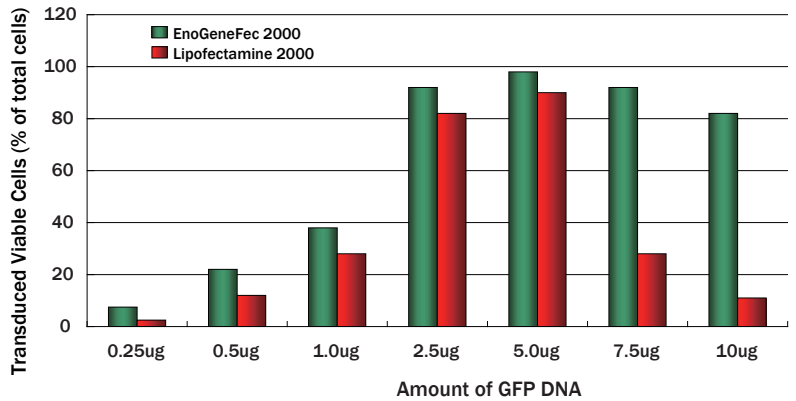
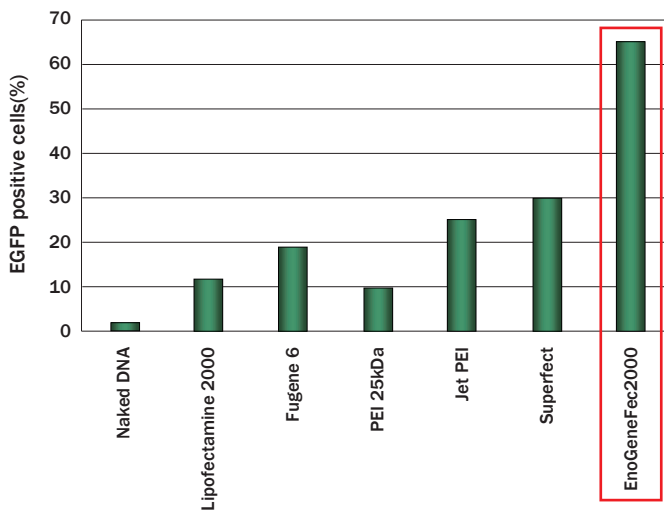
EnoGene 만의 독자적인 기술로 기존 **Liposome 방식과 polycation의 unique formulation의 fusion** 으로 efficiency를 극대화 !! **Cell Type** 마다 최적화된 Transfection Reagent !!

★ **Suspension cell, Primary Cell 전용 Reagent 출시** ★

siRNA + DNA 겸용 Reagent !!



Transfection efficiency of different transfection reagents on **HepG2 human hepatocarcinoma cell**



Higher Viability of **293 Cells with EnoGeneFec 2000**. Transfection efficiency and cell viability of 293 cells transfected with different amounts of GFP plasmid DNA in a 6-well cell culture plate.

Results are recorded 48 hours after transfection

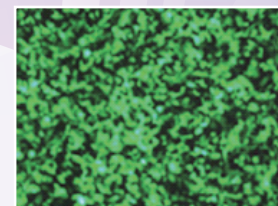
► Ordering Information

Product Description	Cat.no	Size	Cell Type
EnoGeneFec™ 2000	EGF2000-1000	1ml / 1.5ml	Adherent Cell
EnoGeneFec™ 2100	EGF2100-1000	1ml / 1.5ml	Suspension Cell
EnoGeneFec™ 2200	EGF2200-1000	1ml / 1.5ml	Primary Cell
EnoGeneFec™ 2300	EGF2300-1000	1ml / 1.5ml	In vivo

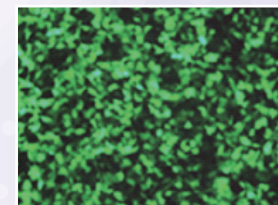
Cells Successfully Transfected with EnoGeneFec 2000 : Adherent

Cell Line	Cell Line Species/Tissue	Transfection Efficiency(%)
293T	Human Embryonic Kidney	100%
C2C12	Mouse/ Muscle Myoblast	90%
Rat2	Rat Fibroblast	85%
MDA-MB-468	Human Breast Carcinoma	75%
Neuro2A	Mouse Neuroblastoma	90%
SHEP	Human Neuroblastoma	90%
JEG-13	Human Placenta	80%
BOSC23	Human Kidney	90%
HT1080	Human Fibrosarcoma	80%
C33A	Human Cervical Carcinoma	90%
MRC5	Human Primary Fibroblast	80%
MDK+Telo	Dog Kidney Cells+Telo	80%
B16	Murine Melanoma	80%
SiHA	Human Cervical Carcinoma	80%
TE671	Human Medulloblastoma	90%
MCF7	Human Breast Cancer	80%
SKOV3	Human Ovarian Carcinoma	85%
HuVEC	Human Ubilical Vein	20%
HepG2	Human Liver Carcinoma	40%
MMRU	Human Melanoma	75%
HEY	Human Ovarian Carcinoma	95%
MMAN	Human Melanoma	80%
Cos1	Monkey Kidney Cell	70%-80%
HTB-81 (Du145)	Human Prostate Carcinoma (metast)	80%
SK-MEL-3	Human Melanoma	60%
T24	Human Bladder Carcinoma	85%
MDA-MB-231	Human Breast Carcinoma	85%
HeLa	Human Cervical Carcinoma	80%-90%
A2780	Human Ovarian Carcinoma	70%-75%
L6	Rat Myoblast	60%-70%
MDA-MB-435	Human Breast Cancer	80%
Calu-6	Human Lung Carcinoma	70%-75%
U2OS	Human Osteoblastoma	80%
SKMC	Human Cardiac Muscle Cells	40%-50%
HCT15	Human Colon Carcinoma	70%-75%
Rabbit-telo	Telomerase-Rabbit Cells	50%
T-47D	Human Breast Cancer	80%-85%
SKBR-3	Human Breast Cancer	100%
HTB-9	Human Bladder Carcinoma	60%-70%
USO2 (T-USO2)	Human Osteosarcoma (tet-inducible)	80%-90%
HT-29	Human Colorectal Carcinoma	60%-70%
HCT116	Human Colon Carcinoma	70%-80%
H441	Human Lung Carcinoma	75%-80%
BG-1	Human Ovarian Carcinoma	70%
TM-3	Mouse Testis Leydig Cell	50%-60%
Y-1	Mouse Adrenocortical Cell	80%

293T cells

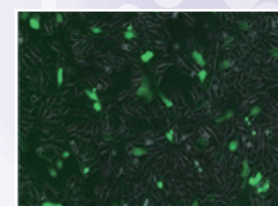


EnoGeneFec 2000

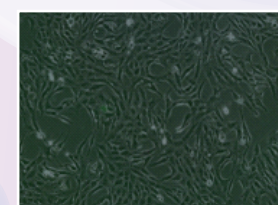


Lipofectamine 2000

Vero African Green Monkey kidney cells



EnoGeneFec 2000



Lipofectamine 2000

Cells Successfully Transfected with EnoGeneFec 2100 : Suspension

Cell Line	Cell Line Species/Tissue	Transfection Efficiency(%)
Jurkat	Human T Lymphoma	25%
HEL	Human Lymphoma	70%-80%
CB3	Mouse Erythroleukemia	25%
Raji	Human B-Lymphoma	50%
K562	Human Myelogenous Leukemia	~30%
EL-4	Mouse Lymphoma Cell	20%